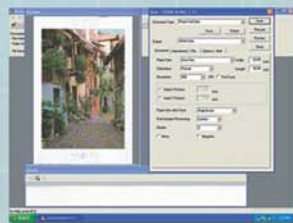


IS & CS-Series Scanners

IS200 Monochrome
CS500 Full Color
CS600 Full Color / Thick media

Full-color & Monochrome solutions for large-format scanning and copying, featuring the worlds fastest scanning speeds and unbeatable accuracy.

- **STANDARD** and upgraded **PRO** models available for each series
- **CIS Contact Image Sensor** method for **0.1% accuracy**
- **Max. scanning speed of 9 in/sec (monochrome) & 3 in/sec (color) at 400 dpi *PRO**
- **“Hands free” Intelligent Thickness Adjustment:** accepts up to **0.8 in. thick originals *CS600**
- **Standard Scanning Master 21 + Software:** Scan-to-File, Scan-to-Print, Scan-to-Email, or Scan-to-PDF
- **600 dpi optical resolution/ Up to 4800 dpi interpolated resolution *PRO**
- **sRGB compatible *CS500, CS600**
- **USB2.0 & IEEE Firewire Plug ‘n’ Play connectivity**



Standard Scanning Master 21+ Driver Software:

Scanning Master 21+ Software enables all CS-series scanners to perform Scan-to-File, Scan-to-Print, Scan-to-Email, or Scan-to-PDF document management tasks. It also allows users to integrate a large-format copying system by combining their CS-series scanner with a large-format printer.

Scanning Arts Software EIS-150:

Graphtec's signature Scanning Arts software allows users to integrate a large-format multi-functional imaging system. With its touch panel user interface, the EIS-150 provides seamless operations for full-color copying, scanning and data transmission of large-size drawings and photographs.

GRAPHTEC

CS & IS-series Specifications

	CS600		CS500		IS200	
	PRO		PRO		PRO	
Document sizes	ARCH E to ISO A4, max. width: 43.3"					
Effective scanning area	Width: 42" (centered), 42.9" max.; Length: 52.5" *1					
Document thickness	0.8" or less (including carrier sheet)		0.06" or less (including carrier sheet)			
Document thickness detection process	Automatic detection by ITA		-			
Optical resolution	600 dpi					
Interpolated resolution	50 to 800 dpi, in 1-dpi increments	50 to 4800 dpi, in 1-dpi increments	50 to 800 dpi, in 1-dpi increments	50 to 4800 dpi, in 1-dpi increments	50 to 800 dpi, in 1-dpi increments	50 to 4800 dpi, in 1-dpi increments
Main scanning system	Contact image sensor system					
Sub scanning system	Document travel (sheet through) system					
Max. Scanning speed at 400 dpi:*2	4.5"/sec. 1.5"/sec.		9.0"/sec. 3.0"/sec.		4.5"/sec. -	
Monochrome	1.5"/sec.		1.5"/sec.		-	
Color (8-bit, 24-bit)	3.0"/sec.		3.0"/sec.		-	
Scanning precision*3	0.1%, ±5 pixels / 42"					
Gradation	Monochrome: bilevel, intermediate tones (dithering, error diffusion) Gray: 256 shades, Color: 8-bit, 24-bit				-	
Threshold value	DSP-controlled automatic setting (monochrome scans)					
Color space	sRGB compatible				-	
Light source	LED (RGB)				LED	
Interface*4	USB 2.0, IEEE 1394					
Output	Image data					
Rated power supply	100 to 120/200 to 230 VAC ± 10%, 50/60 Hz					
Operating environment	Temperature: 50° F to 95° F; Humidity: 35% to 80% RH (non-condensing)					
Power consumption	135 VA or less					
External dimensions (approx.)	47.4" x 37.7" x 25.6" including stand (W x H x D)					
Conforming standard	UL, FCC class A (USA), CE mark (EU)					
Operating system (OS)	Windows® XP Professional, Windows® XP Home Edition, Windows® 2000 Professional					
Weight (approx.)	88.2 lbs. (including stand)					

*1 Documents up to approximately 52.5 ft. in length (driver software limitation) can be scanned. However, the actual document length that can be scanned is limited by the available memory (hard disk or other data storage device) of the computer to which the scanner is connected and also by the grade of the medium being scanned.

*2 For documents up to 0.06" thick - excludes data transfer time. Average scan time varies depending on the document sizes, grade of interface cable and computer configurations.

*3 Notes on scanning precision:

Scanning precision may vary depending on the grade and thickness of the medium being scanned, as well as the operating conditions. The precision figures above were measured under the operating conditions described below:

Test media used :Mylar sheet #200

Ambient conditions :Temperature 68° F ± 3°; humidity: 60% ± 10% RH

*4 The USB 2.0 and IEEE 1394 interfaces cannot be used at the same time.

Brand names and product names listed in this brochure are the trademarks or registered trademarks of their respective owners. Specifications are subject to change without notice.

GRAPHTEC
WESTERN GRAPHTEC, INC.

11 Vanderbilt, Irvine, CA 92618-2067
800.854.8385 ph. • 949.855.0895 fax
Email: scanners@graphtecusa.com
Web: www.graphtecusa.com

Distributed By:
Paradigm Imaging Group
1590 Metro Drive, Suite 116
Costa Mesa, CA 92626
888--221-SCAN (7226)
www.scantopia.com

UL, FCC Class A

CS600-500-IS200DSv1-4000-1204 Printed in the USA